

MODERN  FLAMES

Sunset Charred Oak

SCO-26EL



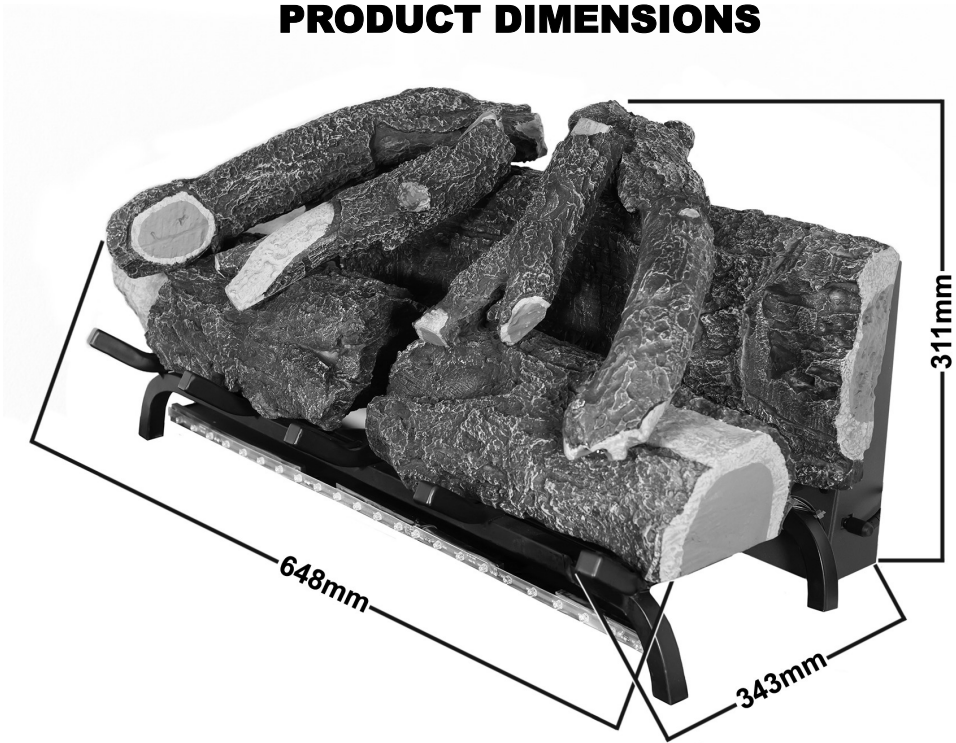
INSTALLATION/SERVICE INSTRUCTIONS

USER INSTRUCTIONS

POWER DATA

	SCO-26EL
Transformer	AC 230V/50Hz input 12V DC output
Lamps	LED 12V
Rotor Motor	12V 15 r/min
Shipping Size	762mm x 419mm x 381mm
Shipping Weight	14.5kg

PRODUCT DIMENSIONS



SCO-26EL
648mm W x 311mm H x 343mm D

BOX CONTENTS



Log Set with Base



Glass Media



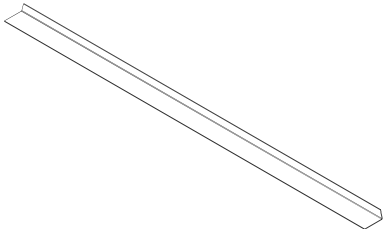
Power Supply



Ember Bed Light Strip



Remote

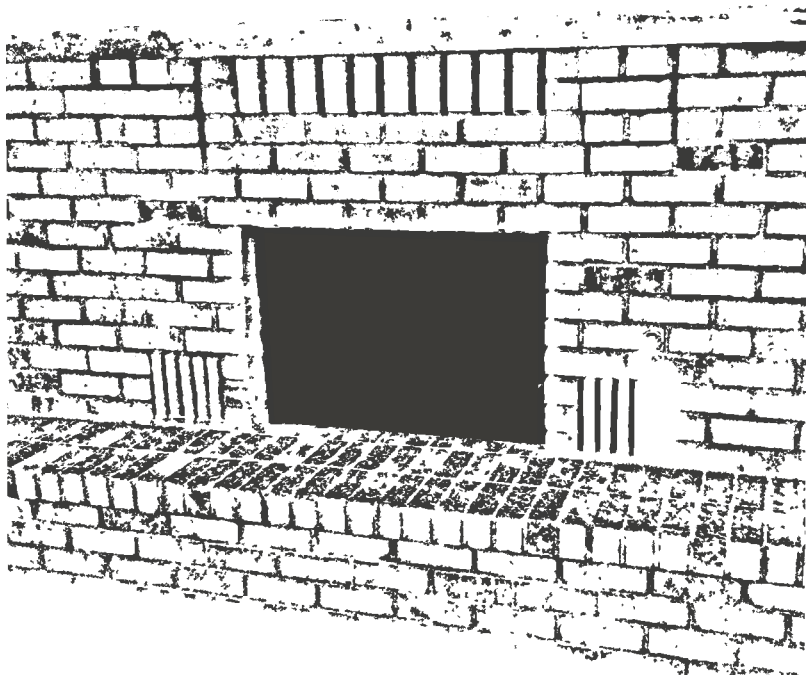


Ember Bed L-metal Bracket

INSTALLATION

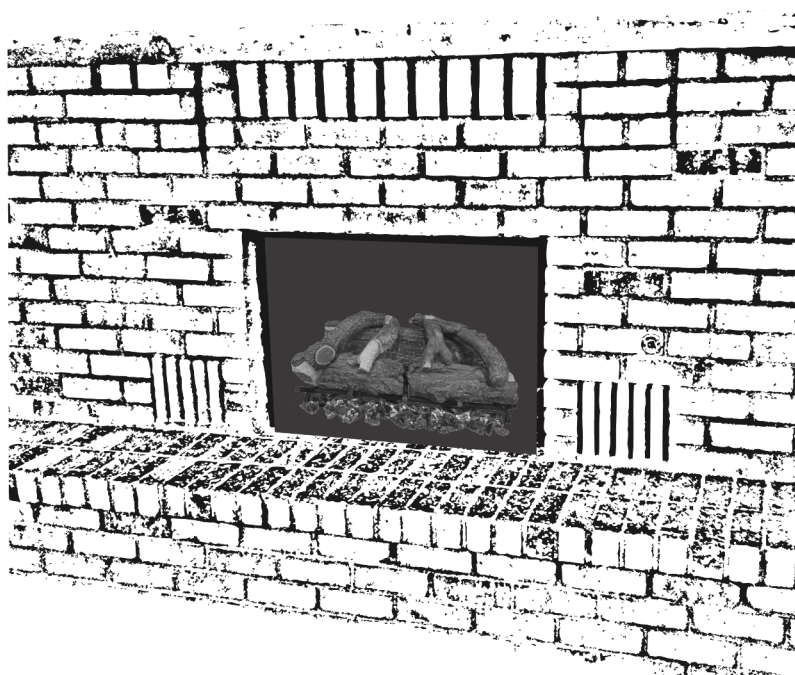
INSTALLATION

This log set is designed to fit into existing fireplaces as an insert to replace a wood or gas burning fire. This log set can also be used in cabinets or recessed wall openings.



1. Make sure the fireplace is clean and free of debris. Plug in the log set.

2. Optionally, plug in the Ember Bed Light Strip into the connector on the bottom right side of the log set and attach to the Ember Bed L-metal Bracket.



3. Simply place the log set in to your existing fireplace. Place the Ember Bed Light strip below the log set with the LEDs facing up.
4. Use the glass media to cover the Ember Bed Light Strip.

OPERATION

On the front face of the log set, near the bottom right side is the main power button. Push this button to begin using the fireplace. On the bottom of the log set are two push buttons that control the flame pattern and the brightness of the log set.



Power button

To begin operation press the Power button. The log set will light up with the last settings used.

Pressing the Dimmer button will cycle the brightness of the log set and ember bed. There are 3 levels of brightness to choose from.

Pressing the Flame button will cycle the flame pattern of the log set. There are 5 different flame patterns to choose from.



Dimmer

Flame

All buttons on the remote function in the same manner as the buttons on the log set.

To begin operation press the Power button. The log set will light up with the last settings used.

Pressing the Dimmer button will cycle the brightness of the log set and ember bed. There are 3 levels of brightness to choose from.

Pressing the Flame button will cycle the flame pattern of the log set. There are 5 different flame patterns to choose from.



MAINTENANCE

TROUBLESHOOTING

PROBLEM	POSSIBLE CAUSE	CORRECTIVE ACTION
Can operate log set functions with mechanical controls but not remote control	A. Low Batteries	A. Replace batteries in remote control with - 2 AA batteries
	B. Not aiming control correctly	B. Aim remote control to the center of the log set where the sensor is located
	C. Remote control defective	C. Replace remote control
	D. Remote Sensor is defective	D. Replace remote sensor inside log set
Nothing comes on	A. Log set is not plugged in to an electrical outlet	A. Check plug
	B. Breaker tripped or outlet has no power	B. Reset breaker, test outlet for power
	E. Defective component	E. Replace motherboard or transformer
Log set lights up but there is no flame image	A. Wiring for motor is loose	A. Disconnect unit from power source and inspect for loose connections from motor
	B. Motor is defective	B. Replace motor
	C. Spindle rod is loose or disconnected	C. Check connection between spindle motor and spindle rod
Log set is squeaking when flame image is on	A. Log set spindle/rod is contacting to metal	A. Apply lithium grease or any standard grease to contacts with rod and metal
	B. Motor is defective	B. Replace motor

CLEANING AND MAINTENANCE INSTRUCTIONS

There is very little maintenance involved with your electric fireplace. Please follow the few points below:

- On a semi-annual basis unplug the log set from it's power source and dust with a dry cloth. Be careful not to brush any wires that may be exposed as you do this.

FREQUENTLY ASKED QUESTIONS

Q. How do you program the remote control?

A. The remote comes pre-programmed. No programming is necessary.

Q. What distance can the remote be used from the log set?

A. Optimal distance for the remote control is within 5 meters.

Q. Can you turn on the log set via the control buttons and off via the remote (or vice versa)?

A. Yes.

Q. How often do the batteries in the remote need to be replaced?

A. Annually, possibly more with heavy use.

Q. Is there a remote receiver in the log set that requires batteries?

A. No, only the actual remote requires batteries. The rest of the log set runs entirely off of the main power supply.

© 2018

MODERN  FLAMES

www.modernflames.com
Please dispose of properly.

